

IOWA

Institute for Public Health
Practice, Research and Policy

Visualize This

Storytelling With Data

Session 4



Visualize This – Storytelling with Data



Anjali Deshpande, PhD, MPH, Clinical Associate Professor, University of Iowa, College of Public Health



Vickie Miene, MS, MA, LMHC, Executive Director, Institute for Public Health Practice, Research and Policy



Abigail Stock, MPH, Admin Services Specialist, Institute for Public Health Practice, Research and Policy

Training provided in partnership with the Institute for Public Health Practice, Research and Policy through a contract from the Iowa Department of Health and Human Services



Data Training Opportunities

Data Basics

Tackling Data

Visualize This

Disaggregate It

Check out our website
to see upcoming
training dates!



IOWA



Visualize This Resources – IHHS

VISUALIZE THIS
STORYTELLING WITH DATA



Training Resources



Iowa Public Health Tracking Portal – HPV Workbook

Visit the HPV Workbook page from the Iowa Public Health Tracking Portal to view the HPV data for the training.

[VIEW THE HPV WORKBOOK](#)



Course Objectives

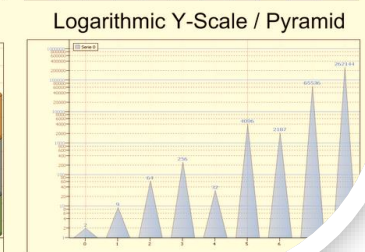
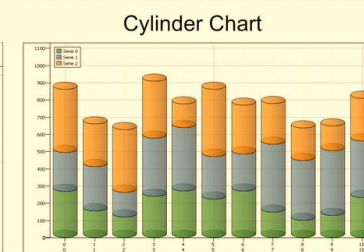
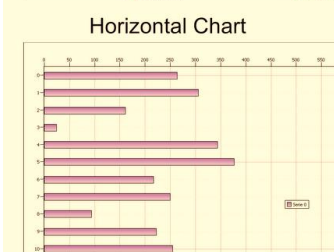
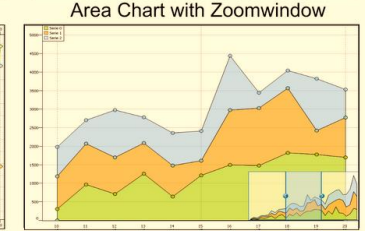
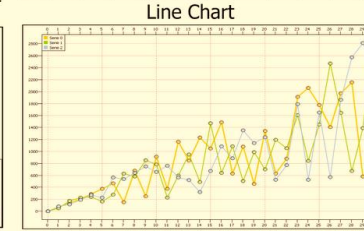
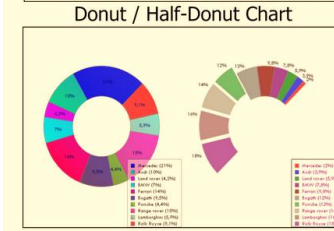
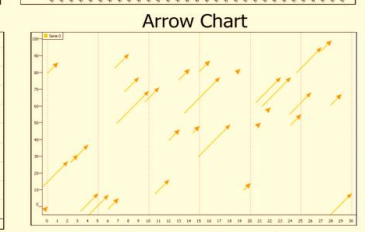
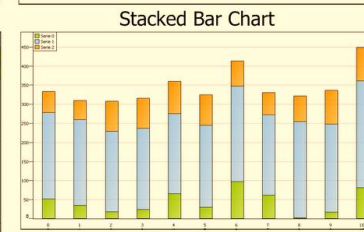
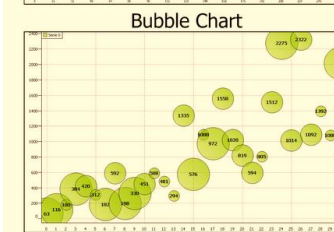
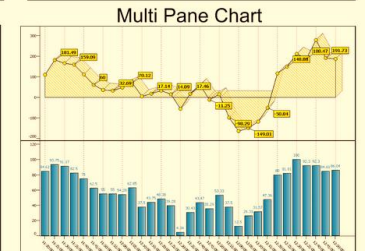
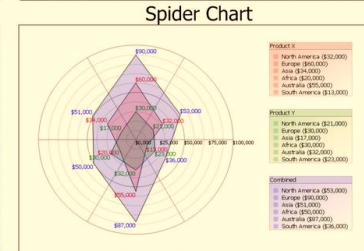
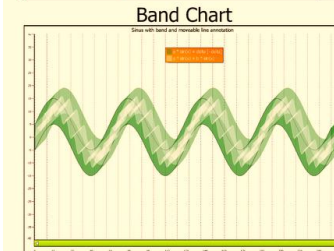
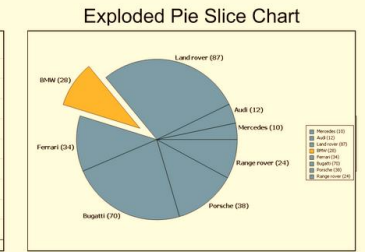
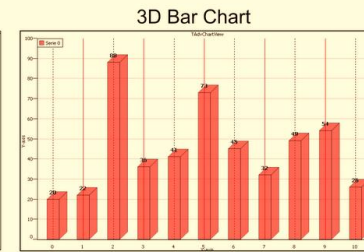
By the end of this course, participants will be able to:

- Summarize the basics of communication theory
- Select strategies for creating effective messages, charts, and graphs.
- Access publicly-available resources that can be used for data visualization



Small Group Activity

20 minutes



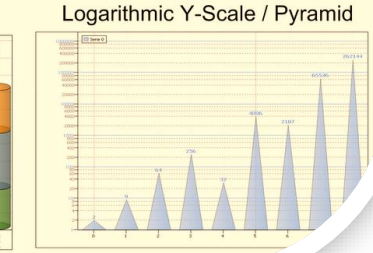
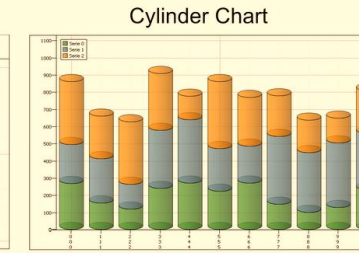
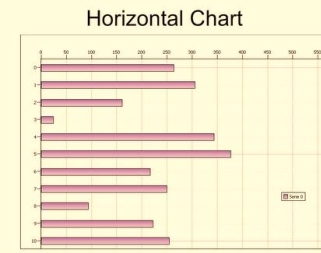
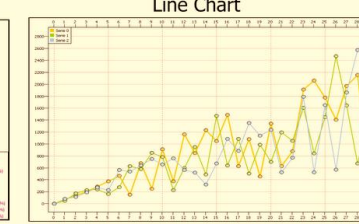
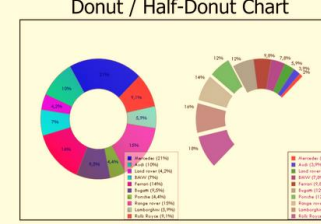
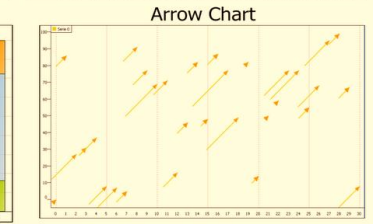
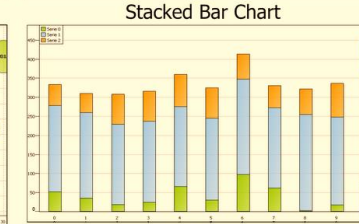
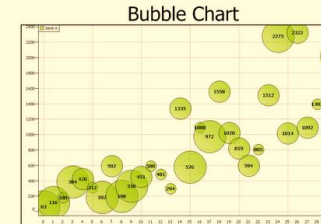
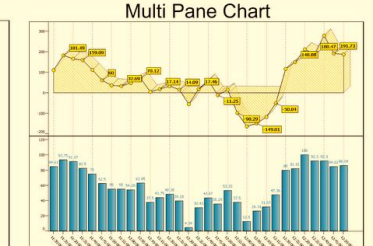
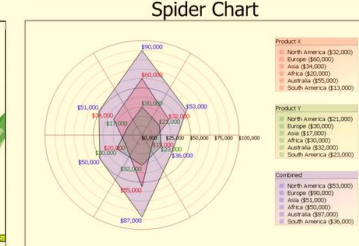
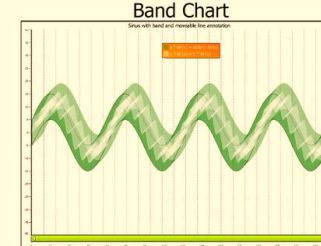
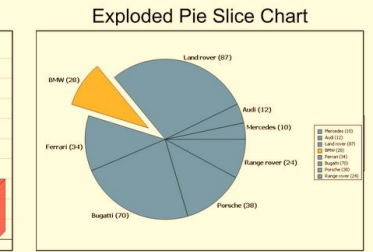
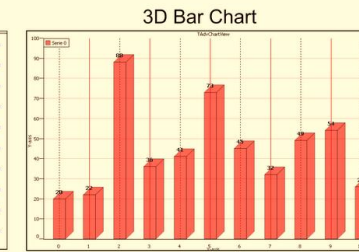
Small Group Activity – 20 minutes

In your breakout groups,

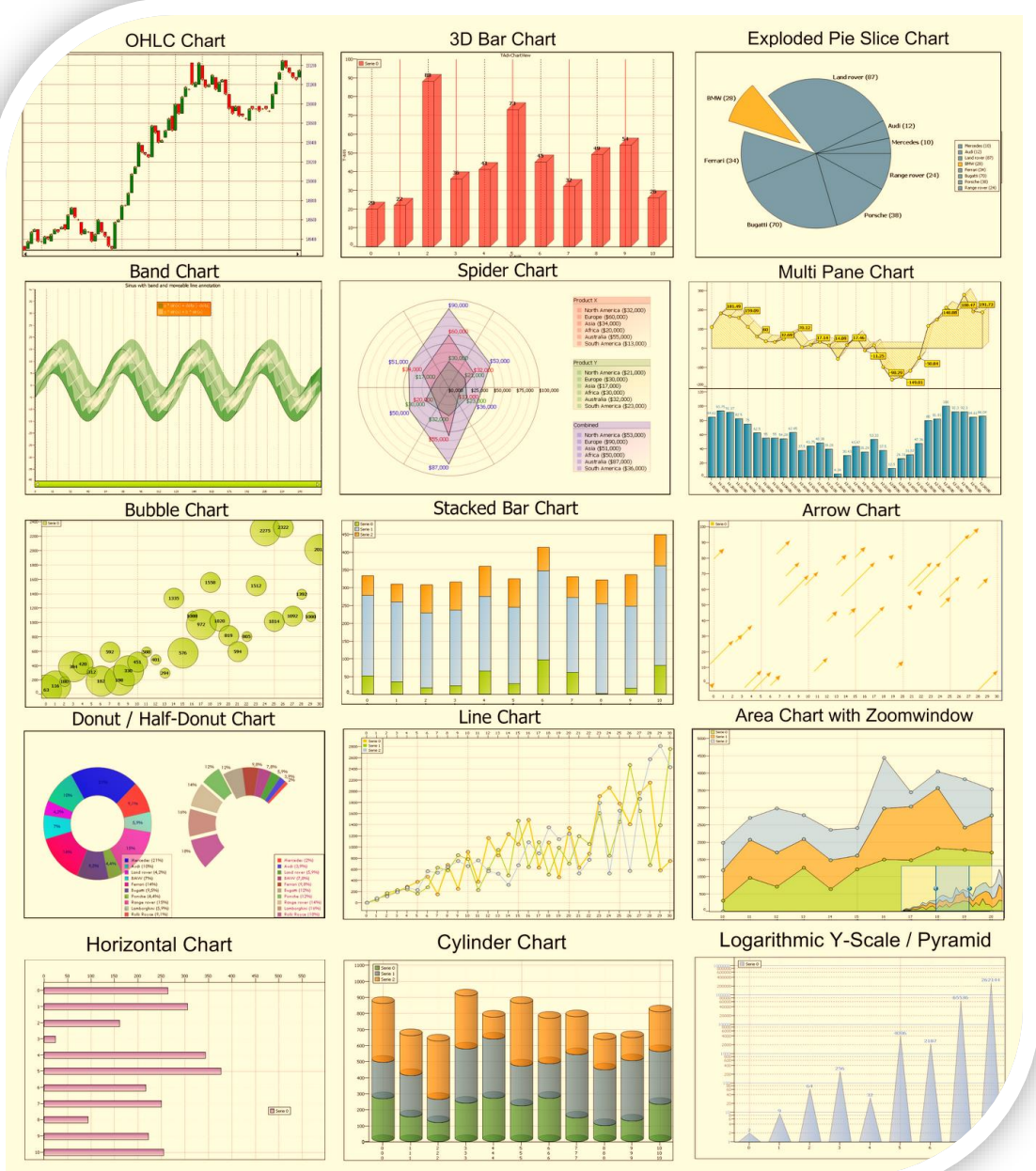
- Share your data visualization
- Remind group members of your target audience and the message you want to convey
- Have group members indicate what message they get from your visualization.
- Was your visualization successful?



Share your visualization!



If you want more feedback on your project, submit it to abigail-stock@uiowa.edu by **December 13th** and the trainers will provide you with feedback.



OVERALL VIZ CONSIDERATIONS

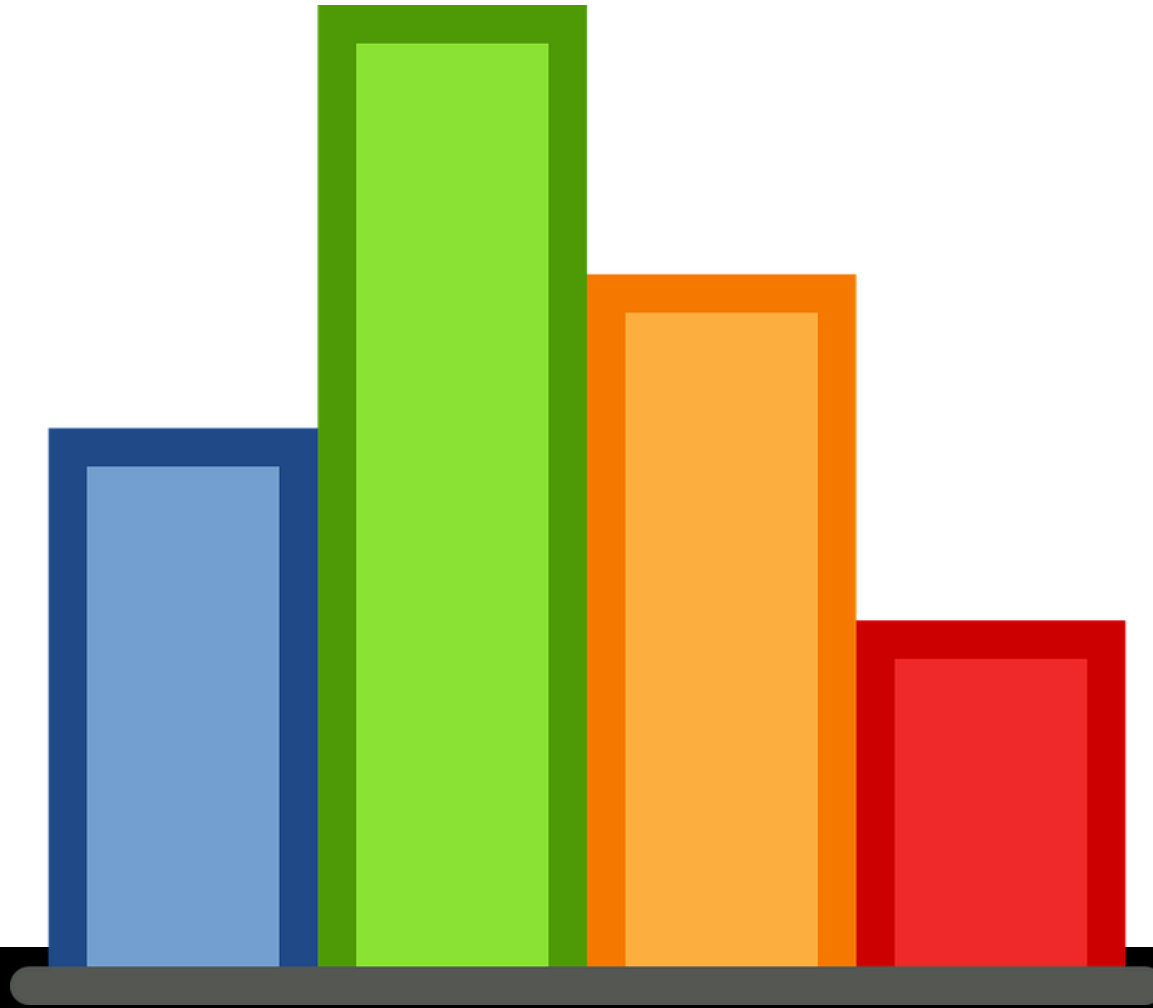
- The chart highlights the most important finding
- Use the most appropriate chart type for the data you have (check out the chart choosers)
- Use the level of precision that your audience requires (only scientists get excited about decimal points)
- Create something meaningful—do not use defaults (EXCEL is your friend)
- Your use of color, text, graphics, arrangement all support what you want to communicate to your audience.
- Bring equity into your visualization!



**Questions?
Comments?**



Menti.com



IOWA



IOWA

Thank you!

anjali-deshpande@uiowa.edu

vickie-miene@uiowa.edu

abigail-stock@uiowa.edu

Institute for
Public
Health
Practice,
Research
and Policy

