

1ST ANNUAL CONFERENCE OF THE IOWA CANCER AFFILIATE NETWORK LEARN. CONNECT. STRENGTHEN

WEDNESDAY, NOVEMBER 12TH, 2025

ANKENY, IOWA

9:00 AM - 4:00 PM CST



Schedule

8:30 – 9:00AM | REGISTRATION

9:00 – 9:20 AM | WELCOME ADDRESS AND ANNOUNCEMENTS

Mary Charlton, PhD, College of Public Health, University of Iowa

Ingrid Lizarraga, MBBS, FACS, Carver College of Medicine, University of Iowa

Vickie Miene, MS, MA, LMHC, Institute of Public Health Practice, Research, and Policy, University of Iowa

9:20 – 10:05 AM | INTRODUCTION TO THE COMMISSION ON CANCER RURAL CANCER PROGRAM ACCREDITATION

Erin Reuter, JD, MS, Sr. Manager, Accreditation, American College of Surgeons

10:05 – 10:15 AM | BREAK

10:15 – 11:30 AM | ACCREDITATION AS A CATALYST: I-CAN MEMBERS' TRANSFORMATIVE PROGRAMS AND THEIR RIPPLE EFFECTS

Moderator: Erin Johnson, PhD, BBA, Professor of Instruction, Department of Management and Entrepreneurship, Tippie College of Business, University of Iowa

Panelists:

- **Amy Marshall**, MSN, RN, Chief of Clinic Operations, Mahaska Health
- **Jentri Haworth**, BSN, RN, Director of Specialty Clinics, Mahaska Health
- **David Evans**, R. EEG T., CNIM, AAS, Director of Cancer Care, Southeast Iowa Regional Medical Center
- **Eric Holste**, PT, DPT, Chief Operations Officer, Shenandoah Medical Center
- **Jennifer Hansen**, MHA, RT(R)(T), Radiation Oncology Manager, Shenandoah Medical Center
- **Mindy Sylvester**, BS, BSN, RN, Oncology Services Women's Health Coordinator, Spencer Hospital
- **Lori Pietig**, MHA, CT, RT(R), Director of Cancer Services, St. Anthony Hospital

11:30 – 11:45 AM | BREAK

11:45 – 12:30 PM | LEADING WITH CULTURE: THE MAHASKA HEALTH JOURNEY IN RURAL CANCER CARE

Kevin DeRonde, MBA, MHM, Chief Executive Officer, Mahaska Health

Daniel Kollmorgen, MD, FACS, Oncology Medical Director & Vice President of Medical Affairs, Mahaska Health

12:30 – 1:30 PM | LUNCH AND NETWORKING

1:30 – 2:15 PM | FROM TENSION TO TEAMWORK: RESOLVING CONFLICT IN CLINICAL SETTINGS

Lon Moeller, JD, Professor of Instruction, Tippie College of Business,
Department of Management and Entrepreneurship, University of Iowa

2:15 – 2:25 PM | BREAK

2:25 – 3:10 PM | MAXIMIZING YOUR ACCREDITATION SITE VISIT EXPERIENCE: HOW TO PREPARE AND AVOID THESE COMMON PITFALLS

Kalea Whitmore, MS, MBA, Accreditation Specialist, American College of Surgeons

Karen Stachon, BS, CPHQ, Senior Accreditation Specialist, Cancer Programs,
American College of Surgeons

3:10 – 3:50 PM | SUMMARY OF ONGOING RESEARCH ACTIVITIES INVOLVING I-CAN

Nicole Fleege, MD, Clinical Assistant Professor of Internal Medicine, Hematology,
Oncology, and Blood and Marrow Transplantation

Aaron Seaman, PhD, Assistant Professor of Internal Medicine, General Internal
Medicine, University of Iowa

3:50 – 4:00 PM | CLOSING REMARKS AND EVALUATIONS

Mary Charlton, PhD, College of Public Health, University of Iowa,

Ingrid Lizarraga, MBBS, FACS, Carver College of Medicine, University of Iowa

Thank you for joining us today – Travel Safe!

Thank you to our sponsors!

IOWA

Institute for Public Health
Practice, Research and Policy



IOWA

College of Public Health

This conference was supported in part by the National Cancer Institute of the National Institutes of Health under award number R01CA254628. The content presented is solely the responsibility of the presenters and does not necessarily represent the official views of the National Institutes of Health.

Speakers:



Aaron Seaman, PhD, Assistant Professor of Internal Medicine, General Internal Medicine, University of Iowa

Aaron is an Assistant Professor at the University of Iowa with appointments in Internal Medicine and Community and Behavioral Health. He studies healthcare delivery and quality improvement to improve cancer care and patient outcomes in clinical and community settings.



Amy Marshall, MSN, RN, Chief of Clinic Operations, Mahaska Health

Amy oversees the daily operations of the primary care and specialty clinics, as well as Public Health, Employee Health, and Occupational Health. Amy has over 25 years of experience in healthcare. She has worked in clinics, emergency medicine, and education before moving into healthcare leadership.



Daniel Kollmorgen, MD, FACS, Oncology Medical Director & Vice President of Medical Affairs, Mahaska Health

Daniel oversees clinical oncology services at Mahaska Health. He is committed to providing high-quality, patient-centered cancer care, integrating multidisciplinary strategies, and mentoring clinical teams in rural healthcare settings.



David Evans, R. EEG T., CNIM, AAS, Director of Cancer Care, Southeast Iowa Regional Medical Center

David brings over 15 years of leadership across healthcare specialties. He leads a multidisciplinary team in cancer care, emphasizing collaborative approaches, communication, and coordinated care to improve patient outcomes in Southeast Iowa.



Eric Holste, PT, DPT, Chief Operations Officer, Shenandoah Medical Center

Dr. Holste has overseen the implementation of Shenandoah's first Cancer Committee, strengthening collaboration, quality improvement, and community outreach efforts.



Erin Johnson, PhD, Professor of Instruction, Department of Management and Entrepreneurship, Tippie College of Business, University of Iowa

Erin's expertise lies in leadership and organizational management. She applies management theory to healthcare collaboration, fostering effective interdisciplinary teamwork.



Erin Reuter, JD, MS, Senior Manager of Accreditation, American College of Surgeons

Erin manages accreditation for the ACS Cancer Programs, specializing in the Commission on Cancer Rural Cancer Program Accreditation and supporting hospitals in rural regions.



Ingrid Lizarraga, MBBS, FACS, Clinical Associate Professor of Surgery, University of Iowa Carver College of Medicine

Ingrid specializes in breast surgical oncology, with interests in improving outcomes for women with breast cancer and advancing surgical education.



Jennifer Hansen, MHA, RT(R)(T), Radiation Oncology Manager, Shenandoah Medical Center

Jennifer plays a key role in developing Shenandoah's cancer services and implementing the facility's first cancer committee alongside administrative leadership.



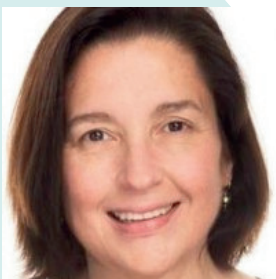
Jentri Haworth, BSN, RN, Director of Specialty Clinics, Mahaska Health

Jentri leads multiple specialty service lines with a focus on clinical excellence, operational efficiency, and patient experience. Jentri emphasizes collaboration, accountability, continuous improvement, and staff development to deliver safe, high-quality, personalized care aligned with the organization's mission.



Kalea Whitmore, MS, MBA, Accreditation Specialist, American College of Surgeons

Kalea advises new programs pursuing accreditation, guiding hospitals through onboarding and standards interpretation. A cancer survivor, she advocates for awareness and innovation in oncology care.



Karen Stachon, BS, CPHQ, Senior Accreditation Specialist, Cancer Programs – American College of Surgeons

Karen Stachon provides expert technical support to internal and external constituents, and she collaborates with CoC member organizations and external groups to develop, implement and monitor CoC cancer program standards.



Kevin DeRonde, MBA, MHM, Chief Executive Officer, Mahaska Health

Kevin leads Mahaska Health with a focus on organizational growth, rural healthcare innovation, and expanding access to high-quality cancer care.



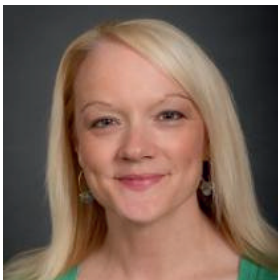
Lon Moeller, JD, Professor of Instruction, Tippie College of Business, University of Iowa

Lon teaches business law, ethics, negotiation, and leadership, focusing on communication, conflict management, and organizational strategies. He has 25 years of teaching experience, authored five books, served as an attorney, held multiple academic leadership roles, and worked as a mediator and arbitrator.



Lori Pietig, MHA, CT, RT(R), Director of Cancer Services, St. Anthony Regional Cancer Center

Lori oversees oncology, radiation, and supportive services, leading initiatives in program development, access expansion, and cancer control strategies in west-central Iowa.



Mary Charlton, PhD, Professor and Chair, Department of Epidemiology, College of Public Health, University of Iowa

Mary's research focuses on cancer epidemiology, health disparities, and improving cancer care access across Iowa. She also serves as the director of the Iowa Cancer Registry.



Mindy Sylvester, BS, BSN, RN, Oncology Services & Women's Health Coordinator, Abben Cancer Center of Spencer Hospital

Mindy has nearly three decades of experience in oncology and women's health, leading survivorship and community-centered programs that enhance rural cancer care.



Nicole Fleege, MD, Clinical Assistant Professor of Internal Medicine, Hematology, Oncology, and Blood & Marrow Transplantation, University of Iowa

Nicole specializes in hematology and oncology with a focus on clinical research, patient outcomes, and collaborative cancer care.



Vickie Miene, MS, MA, LMHC, Interim Director, Institute for Public Health Practice, Research, and Policy, College of Public Health, University of Iowa

Vickie leads initiatives connecting research, policy, and community-based practice, with extensive experience in mental health systems, health program implementation and quality improvement initiatives.

Thank You